

# APPLICATION NOTE

EngineSetup software description

AN-50 for TL-3724

## General Information

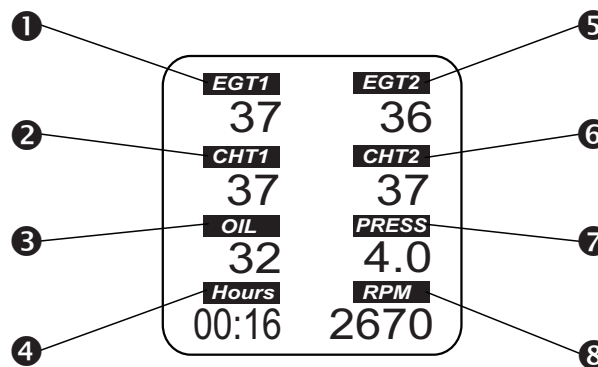
To set all parameters, which are shown on the TL-3724 display, use the EngineSetup.exe program.

**NOTE:** The password for setting the instrument is **9999**. In case the instrument was supplied together with an engine or was sold to you as already installed in the aeroplane, the manufacturer of the engine or distributor of the aeroplane reserves the right to change the password. This is due to the warranty guarantee.

## Display lay-out

In the program you can set eight basic values that are shown on the TL-3724 display together with other information, which is used for engine identification, etc.

**NOTE:** To download the configuration of the instrument, click on “Read config”  
Prior to making any changes you need to download the configuration!



**Engine Monitor Configurator**

Quantities	Input	Type of sensor	Warning	Alarm
RPM			5800	6000
Water		3724-04	150	160
Hours			-9999	-9999
EGT4	4	K	880	900
Oil		3724-04	140	150
Press		3724-05	60	80
Batt			160	170
EGT3	3	K	880	900

Buttons: Read config, Update config, Change logo, Update firmware, Exit

Engine: S/N -undefined-, Type Rotax 912, Display ROTAX, Pulses p.rev. 1, Total Time 0

Ready to Take Off: Oil temp 50, Over RPM 5000

Temperature: °C (selected), °F

Press: bar (selected), psi

Flow: K factor 8450, Average 5 sec

Progress: ( Ready )

Memory Mode: 5.5 hours (selected), Check

Button Clear: Disable (selected), Enable

Minimal oil pressure: Warning 20, Alarm 10, Min. RPM 1000

Misc Contrast 50

Flow Units: l/h (selected), G-US/h, G-UK/h

Callouts:

- Position - 1
- Position - 2
- Position - 3
- Position - 4
- Position - 5
- Position - 6
- Position - 7
- Position - 8
- Serial number
- Engine type
- Name shown on the display
- Pulse per revolution
- Engine Hours
- Fuel Flow Sensor K-Factor
- Average value for averaging instant fuel flow
- Connection check between PC and the instrument
- Minimum RPM to activate Engine Hours and limit checks 5 seconds later low pressure check will be activated.
- Display contrast
- This enables the external button to delete maximum values. Hold the button and turn-on the instrument for deleting maximum values.
- Available Units

## Limits value setting

Type of sensor. In case of thermocouple probe select:

**K** for thermocouple type K (EGT)  
**J** for thermocouple type J (CHT)

Warning limit  
(For no service check set -9999)

Alarm limit  
(For no service check set -9999)

In case of thermocouple probe select input number (see wiring diagram)

### Label Description:

EGT = Exhaust Temperature  
CHT = Cilinder Head Temperature  
WATER = Water Temperature  
OIL = Oil Temperature  
PRESS = Oil Pressure  
BATT = Battery voltage (measured in the instrument connector)  
HOURS = Engine Hours  
FLOW = Fuel Flow  
RPM = Rotation per Minute  
IAT(O) = Inside Air Temperature (sensor connected to Oil input - pin 31)  
IAT(W) = Inside Air Temperature (sensor connected to Water input - pin 35)  
OAT(O) = Outside Air Temperature (sensor connected to Oil input - pin 31)  
OAT(W) = Outside Air Temperature (sensor connected to Water input - pin 35)  
REF = Temperature measured in the instrument connector

Quantities	Input	Type of sensor	Warning	Alarm
RPM			5800	6000
Water		3724-04	150	160
Hours			-9999	-9999
EGT4	4	K	880	900
Oil		3724-04	140	150
Press		3724-05	60	80
Batt			160	170
EGT3	3	K	880	900

Buttons: Read config, Update config, Change logo, Update firmware, Exit

Engine parameters:  
S/N: -undefined-  
Type: Rotax 912  
Display: ROTAX  
Pulses p.rev.: 1  
Total Time: 0

Ready to Take Off:  
Oil temp: 50  
Over RPM: 5000

Temperature:  
°C / °F  
Press: bar / psi

Flow:  
K factor: 8450  
Average: 5 sec

Minimal oil pressure:  
Warning: 20  
Alarm: 10  
Min. RPM: 1000

Flow Units:  
l/h / G-US/h / G-JK/h

Progress: ( Ready )

Minimal oil pressure  
(insert the values without any points  
example: 5.2 = 52)

Minimal oil temperature  
to show "READY"  
message

Maximum RPM that  
can't be exceeded  
until reaching the  
minimum oil  
temperature

**NOTE:** Limit values of oil pressure, fuel pressure and battery voltage are written without any points. Always write the number in the form of ones and tenths.

## Other information

- 1.) In case you choose not to display "engine time" value on the TL-3724, the value will be always shown only for about 2sec. right after turning the instrument on.
- 2) Time and date can be set only in TL-Control.exe program, which is supplied together with TL-3724.
- 3) Water temperature is displayed under CHT symbol (as a result of Rotax engine requirements).

Rev. B  
(05/2006)

Information furnished by TL elektronik is believed to be accurate and reliable.



TL elektronik, Airport, Building 125, Czech Republic - 503 41 Hradec Kralove

Tel: +420 49 548 23 92, +420 49 548 23 93 • Fax: +420 49 548 23 94  
Internet web page address: www.tl-elektronik.com • e-mail: info@tl-elektronik.com